



# USERS HANDBOOK

THIS HANDBOOK REFERS TO FTP-900 MODEL

PLEASE READ THIS MANUAL BEFORE USING YOUR NEW RIFLE, IT CONTAINS IMPORTANT SAFETY INFORMATION AND INSTRUCTION ON ADJUSTMENT AND MAINTENANCE.



*Illustrated with optional telescopic sight and mounts.*

## \*\*\*\*\* SAFETY CODE \*\*\*\*\*

- 1 - TREAT THIS AIR RIFLE AS IF LOADED.
- 2 - NEVER POINT IT AT ANYONE, EVEN IF UNLOADED.
- 3 - NEVER LEAVE THIS RIFLE UNATTENDED WHEN COCKED OR LOADED.
- 4 - ALWAYS BE SURE OF WHAT LIES BEYOND YOUR TARGET.
- 5 - ALWAYS CONDUCT YOURSELF IN A SPORTSMAN-LIKE MANNER.

ALWAYS BE AWARE THAT YOUR ACTIONS WILL BE UNDER THE SCRUTINY OF OTHER MEMBERS OF THE PUBLIC WHO MAY NOT SHARE YOUR ENTHUSIASM FOR AIR WEAPONS. BAD PRACTICES PROMOTE BAD PUBLICITY. DO NOT JEOPARDISE YOUR FUTURE ENJOYMENT BY MISUSING THIS WEAPON.

**WARNING ! - UNAUTHORIZED DISASSEMBLY OF THIS RIFLE WILL INVALIDATE THE MANUFACTURERS WARRANTY**

## Gun security

It is important to make sure that your gun is always kept in a safe and secure environment when not in use.

For rifles purchased in the UK, and that are NON FAC rated (high power), a free gun lock and mounting eyes are supplied. Please follow the simple fixing instructions and keep our sport safe.

**Note: If there is no gun lock in the box please contact the dealer you purchased the rifle from.**



PLEASE READ THIS MANUAL BEFORE USING YOUR NEW RIFLE, IT  
CONTAINS IMPORTANT SAFETY INFORMATION AND INSTRUCTION ON  
ADJUSTMENT AND MAINTENANCE.

WARNING ! - UNAUTHORISED DISASSEMBLY OF THIS RIFLE WILL INVALIDATE THE MANUFACTURERS WARRANTY

## Important information

**Warning.** Only use clean, filtered and dry compressed air. Never use any other gas, particularly industrial or welding gases such as oxygen, carbon dioxide, acetylene, hydrogen, argon, etc.

Before leaving the factory this rifle was Q.A. inspected and test fired using Air Arms pellets to check operation and final adjustment.

The FTP-900 has been dispatched in a plastic case. This case is for transportation purposes only and not intended for daily use.

Air Arms cannot be held responsible for damage or missing items due to transit damage, mishandling or being tampered with after leaving the factory.

If this rifle is not received in the original case, please examine carefully for any damage, missing tools or documentation.

In the first instance any problems or complaints regarding this product should be referred to the supplier.

The air cylinder is a highly pressurised unit that must not be modified in any way. Serious personal injury may result if this, and the advice below is not followed.

Do not pressurize the cylinder if there are any surface abrasions or dents. Contact Air Arms for advice.

Do not store the rifle in places with, or near sources of high temperature such as fires or boilers.

Do not attempt to dismantle when pressurised.

Do not pressurize beyond the stated filling pressure (see filling instruction section). Damage caused by such action is not covered by the manufacturers warranty.

If compressed air is being used other than from a diving shop, the inside of the cylinder should be inspected for corrosion at least annually. If in doubt contact Air Arms for advice.

In any event the cylinder should be inspected every two to three years depending upon usage.

Air Arms can provide this service at a reasonable cost.

To maintain this rifle in good working order it should be serviced annually by a competent gunsmith, your supplier may be able to provide this service or contact air arms.

A reasonable amount of advice will be provided to enable the end user to service their own rifle, however this is at the discretion of Air Arms and may not be given in all cases.

The velocity of this rifle has been set using Air Arms field pellets. If any other make or type of pellet is to be used the rifle must be re-tested with the pellet that is to be used, to ensure the muzzle energy is within the limits determined by current legislation.

Due to the nature of hand pumps and their relative inefficiency in removing moisture from the compressed air, the chances of corrosion damage to the cylinder and other internal components are increased.

Therefore the rifle should be regularly serviced and/or checked for any signs of damage by a competent gunsmith.

Air Arms recommend using a dry pack filter kit on any hand pumps used to fill our air rifles.

If accessories not manufactured by Air Arms are used on this rifle, Air Arms can not be held responsible for any loss of performance. Contact your supplier or Air Arms for any advice on this matter.

Do not store this rifle in a damp place such as garden shed or garage.

Do not store this rifle in a plastic or PVC gun bag without first applying a surface corrosion inhibitor.

Always ensure the loading bolt is fully closed before firing.

## IMPORTANT INFORMATION - Continued

### CHECKING VELOCITY

- 1> Use a reliable chronograph to check velocity, (the formula below requires the reading to be in feet per second - FPS)
- 2> Use fine measurement scales to weigh the pellet, If scales are unavailable the pellet weight may be stated on the pellet container lid or contact the supplier. (The formula requires the weight to be in grains). To convert from grams to grains multiply by 15.432, i.e.  $0.69 \text{ grams} \times 15.432 = 10.65 \text{ grains}$ .
- 3> To find the muzzle energy in ft/lbs use the formula  $(\text{FPS} \times \text{FPS} \times \text{Grains}) / 450240$ , i.e.  $(700 \times 700 \times 10.65) = 5218500$  divide by 450240 = 11.59.

CURRENT LEGISLATION LIMITS NON-FAC HOLDERS TO AIR RIFLES WITH A MAXIMUM OF 12ft/lbs MUZZLE ENERGY.

**WARNING!** IT IS A VERY SERIOUS OFFENCE TO BE IN POSSESSION OF AN AIR RIFLE THAT YOU ARE NOT CERTIFICATED FOR. CONVICTION CAN RESULT IN CONFISCATION OF YOUR RIFLE, A HEAVY FINE OR IMPRISONMENT, EVEN A COMBINATION OF ALL THREE.

### \*\*\*\*\* LIMITED LIABILITY WARRANTY \*\*\*\*\*

*This product is warranted to the retail customer for 12 months from date of purchase against defects in materials and workmanship and is transferable to any subsequent owner.*

*Proof of purchase is required to receive warranty repairs, retain your purchase invoice and return the warranty registration card as soon as possible after purchase. The warranty card must show the dealer/supplier name and address and date of purchase.*

#### **What is covered**

Replacement parts & labour on a 'back to base' basis, return transportation to the consumer (mainland UK only).

#### **What is not covered**

Transportation from the consumer to Air Arms.

Damage caused by misuse, abuse, lack of routine maintenance, transit damage between the dealer/supplier and the consumer or unauthorized disassembly.

Parts subject to normal wear and tear.

Any other consequential cost incurred by the consumer.

Return transportation to consumers outside mainland U.K..

No warranty is implied as to the fitness for any particular purpose.

AIR ARMS RESERVE THE RIGHT TO ALTER THE CONSTRUCTION, APPEARANCE OR PERFORMANCE OF ANY PRODUCT WITHOUT PRIOR NOTIFICATION. ALL ILLUSTRATIONS ARE FOR INFORMATION PURPOSES ONLY AND DO NOT NECESSARILY SHOW THE EXACT MODEL THAT WAS PURCHASED.

## INTRODUCTION

Thank you for purchasing the Air Arms FTP-900.

This rifle has been designed to be an extension of the shooter with many adjustments and shooting tools built-in.

The stock is the main interface with the rifle and where most adjustment will be made to fit the rifle to each shooter.

The butt features 8 positional adjustments including a ball jointed shaft for maximum comfort. The cheek piece also features a ball jointed shaft as well as lateral and longitudinal adjustments.

The fore-end piece (hamster) is fitted with two ball jointed shafts that allow the fore-end to be tilted side to side and back and forth.

The pistol grip features a palm shelf that can be adjusted up and down to close or extend the grip.

The trigger has 8 position and setting adjustments.

We hope you enjoy your FTP-900.

NOTE: On the front of the cylinder is an engraved warning reading....

READ MANUAL. MFP 220Bar (3190psi). MSP 220Bar (3190psi). DOM \*\*/\*\*/\*\* \*\*. INSPECT ANNUALLY.

MFP = Maximum Filling Pressure. The pressure is stated.

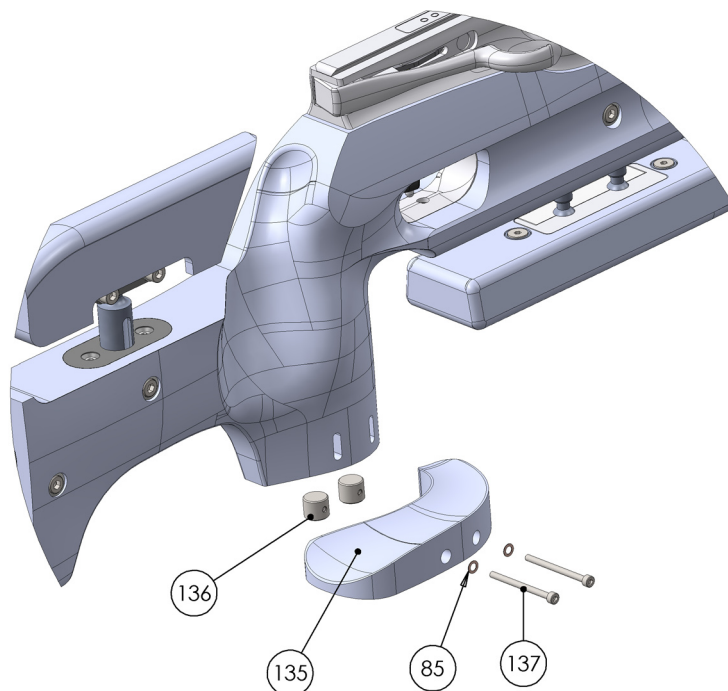
MSP = Maximum Safe Pressure. The pressure is stated.

DOM = Date of Manufacture. The date is stated.

## RECEIPT OF YOUR RIFLE

Your FTP-900 has been supplied in plastic Flambeau case. This case was for transportation purposes only and not intended to be used on a daily basis.

Your rifle has been packed without the palm shelf (135) fitted to ensure safe transit. To fit the shelf insert the nuts (136) into the holes in the bottom of the pistol grip, insert the bolts (137) and washers (85) through the shelf and into the slots in the pistol grip and tighten using the 2.5mm allen key.



## FILLING INSTRUCTIONS

**NOTE ! ONLY USE CLEAN, DRY AND FILTERED COMPRESSED AIR, PREFERABLY FROM A DIVING SHOP. OVER PRESSURIZATION MAY DAMAGE THE CYLINDER BEYOND REPAIR.**

The recommended filling pressure of the FTP-900 is 200 bar (2900 psi) this will return the best performance. It is acceptable to increase this to 220 bar (3190 psi) for general practise, the overall shot to shot spread on the charge will rise slightly but you will benefit from extra shots.

The FTP-900 is filled using a probe fitted to an air supply. The probe is inserted into the filling hole located under the dust cover on the end of the cylinder. The dust cover is opened by unscrewing in an anticlockwise direction **Note: the cover does not screw off completely**. Once the probe is fully inserted check to make sure the bleed valve on your filling kit is closed, and **slowly** open the main valve on you bottle or start pumping if you are using a purpose made air pump.

The air will now transfer from the filling kit to the rifle, the valve in the end of the cylinder will open and close automatically.

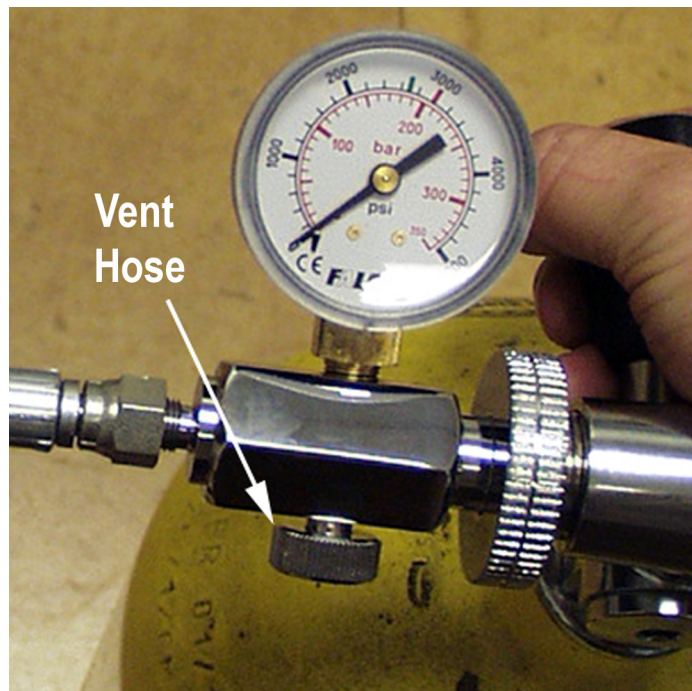
Once the desired filling pressure is reached (always use the gauge on the kit and not the rifle) stop the air supply by closing the main valve or stop pumping and slowly open the bleed valve on the kit. The valve in the rifle will close automatically and the hose will vent. You can now remove the probe from the rifle and close the dust cover. **DO NOT TRY AND REMOVE THE PROBE BEFORE THE HOSE IS VENTED.**

The rifle is now ready to shoot.



The FTP-900 is fitted with a pressure indicator mounted on the front end of the rifle. This provides the user with a visual check on the amount of air remaining in the cylinder **this indicator should not be used during the filling process** as the needle reaction speed has been slowed to prevent damage whilst filling. After filling the needle can take several seconds to synchronize with the air in the cylinder. Although every gun is slightly different the recommended refill pressure for the FTP-900 is between 100Bar (1450psi) and 110Bar (1595psi).. **Always use the gauge on the filling kit.**

**NOTE:** It is recommended that the O rings on the probe are smeared with a light synthetic oil to from time to time to keep them lubricated. This will help avoid wear and prolong the life of the O ring.



## COCKING AND LOADING

The FTP-900 is a lever operated rifle. When the lever is opened and pulled fully to the rear, the breech is exposed and the sear/trigger mechanism is engaged. Once the lever is pushed forwards into the closed position the breech is shut and the rifle is now live and ready to fire.

Note: The effort required to operate the lever is low. The lever will come to a stop at the rear of its travel. DO NOT USE EXCESSIVE FORCE.



If the rifle does not cock, this may be due to incorrect trigger adjustment. The trigger also requires a pull through motion. If the trigger has not been 'pulled through' the sears may not have reset and will not be able to engage when the rifle is next cocked.

## SHOOTING AIDS

The FTP-900 has several shooting aids built-in to the design, these include the wind indicator mount built into the muzzle and the spirit level built into the barrel support.

The wind indicator allows the shooter to attach a media of his/her choice to the rifle and gauge the wind/air movement at the muzzle. Any light material can be used such as cotton or a feather.

The level helps the shooter to make sure of their cant when shouldering the rifle.



The FTP-900 has two transfer port adjusters (one on each side below the breech) built in to the rifle. These are used to control the flow of air to the barrel and fine tune the output of the rifle. On export models both ports are accessible to the shooter, although only one is needed. UK rifles have only the right hand port available. These ports are for fine tuning the rifle to different pellet brands and allow the shooter to reduce the power if required.

To access the ports simply remove the covering button head screw, underneath which is the adjuster screw. Simply turn the screw in or out and test the rifle over a chronograph to set the velocity to the required output. Once setting is complete replace the cover screw to reduce the chance of dust or moisture entering the action.



## STOCK ADJUSTMENTS

The FTP-900 stock has four areas of adjustment. The fore-end, cheek piece, butt hook and pistol grip.

The cheek piece and butt hook are mounted on single ball joints to allow maximum positional adjustment. The fore-end is mounted on twin ball jointed rods. These joints will allow the fore-end to cant from side to side but also allow a small amount of tilt from front to back approximately 10-15 degrees.

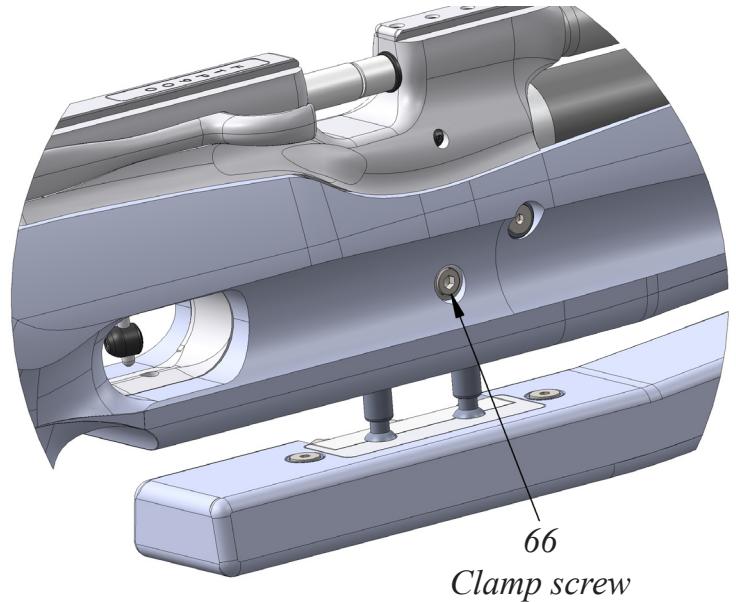
### FORE-END

The fore-end mounting rods are fitted to the rifle through two holes in the bottom of the stock and held in place by a clamp. The screw for the clamp is in the side of the stock in the centre of the two rods.

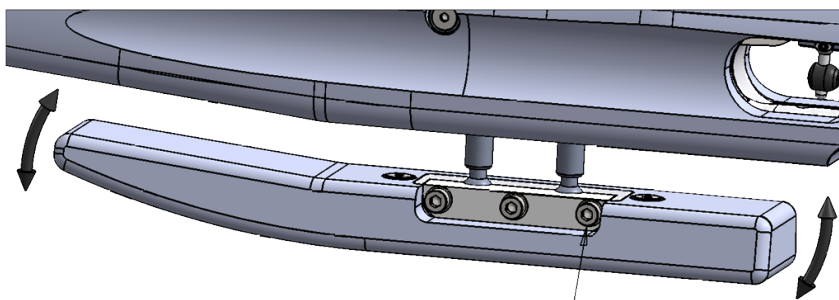
Loosening this screw will allow the fore-end to be adjusted in and out of the stock.

Once the desired position is achieved re-tighten the screw (do not over tighten).

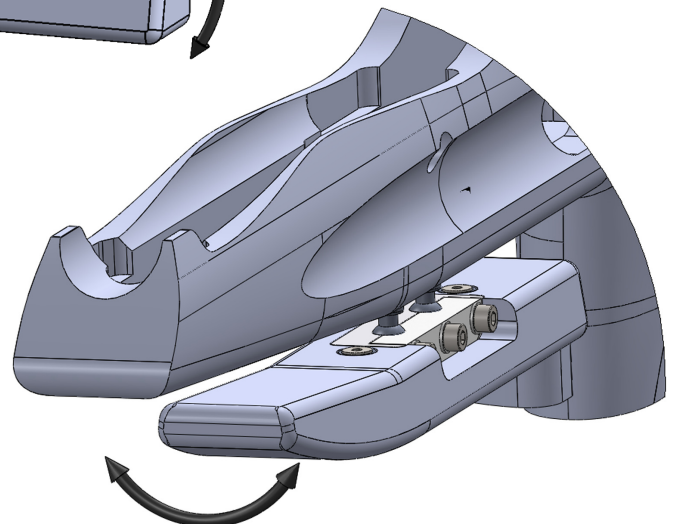
If the required adjustment down can not be achieved with the standard mounting rods, extender rods are available from your stockist or contact Air Arms for information on where to purchase.



To adjust the cant and slope of the fore-end, loosen the three screws in the side of the clamp. It is best not to loosen the screws all the way as this will make it more difficult to hold the position of the fore-end. Once the desired position is achieved re-tighten the screws evenly until the clamp is secure.

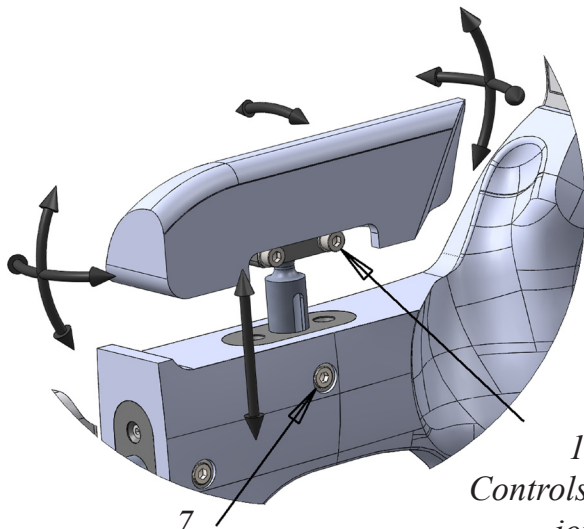


67  
*Adjustment screws allow positioning of the fore-end piece, a small amount of front to back tilting can be achieved. The side clamp screw (66) needs to be loosened to allow pillar movement*



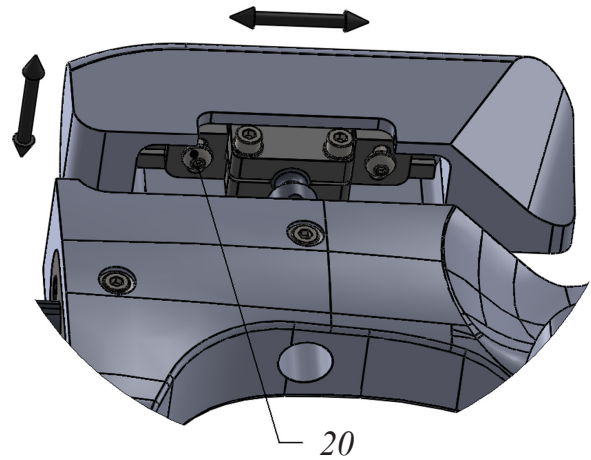
## CHEEK PIECE

The cheek piece can be raised and lowered in the stock by loosening the screw in the side of the stock. With the screw loose, position the cheek piece to the required height and re-tighten the screw (do not over tighten). Extender rods are available as an accessory if the adjustment is not enough from the standard rods supplied. Please contact your stockist or Air Arms.



*Cheek piece rod locking screw. Allows the cheek piece to be raised and lowered*

*19  
Controls the ball joint*



*20  
Cheek piece rail screw. Allows the cheek piece to move from side to side and back to front*

The cheek piece can be moved backwards and forwards and side to side on the rod by loosening the two screws that hold the clamp to the rail mounted in the cheek piece.

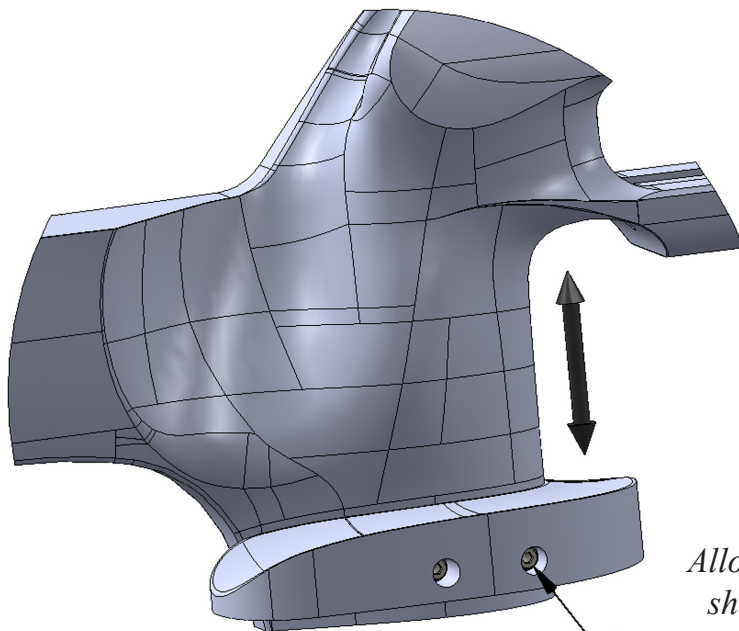
To adjust the ball joint on the cheek piece rod loosen the two screws through the clamps and position as required.

Once all adjustments have been made re-tighten the screws (do not over tighten).

## PISTOL GRIP

The palm shelf can be raised and lowered by loosening the two screws in the side of the shelf (46) and the shelf being moved up or down. Once the shelf is in position re-tighten the screws (do not over tighten).

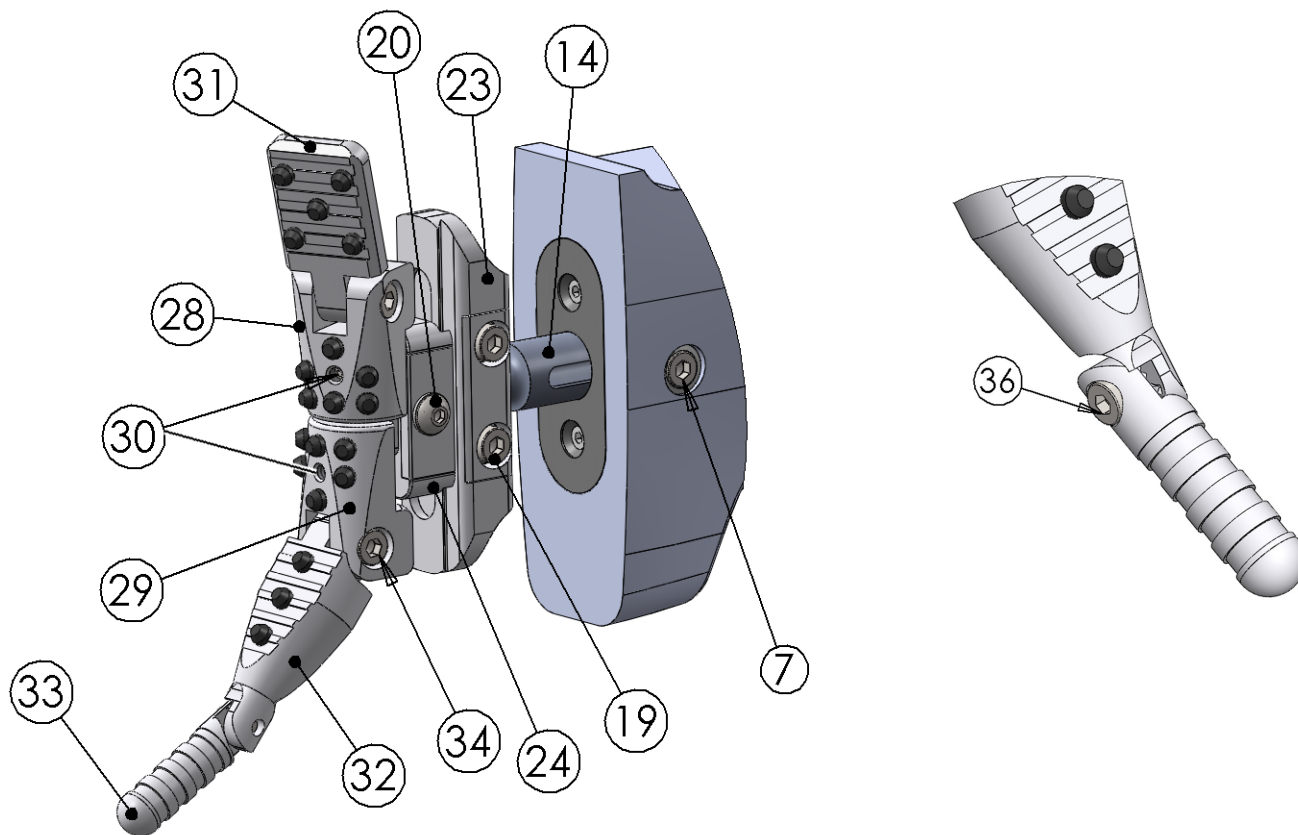
A thicker palm shelf is available as an accessory for anyone who wishes more upward adjustment. Please see your stockist or contact Air Arms.



*46  
Allows the palm shelf to move up or down*

## BUTT HOOK

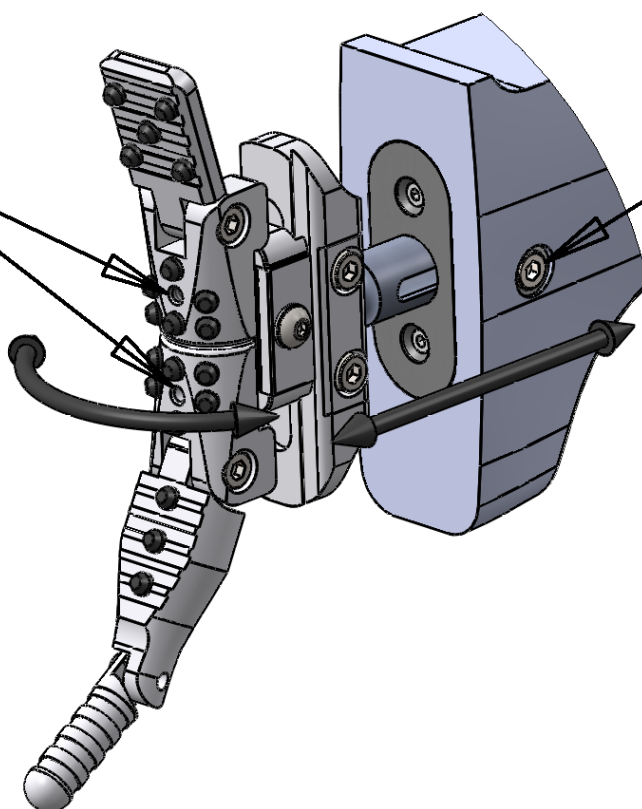
The butt hook of the FTP-900 has eight adjustment points, one of which is a ball joint. Combined, these adjustments allow the shooter to place the butt hook in the perfect position. A longer extender rod is available as an accessory if you require more adjustment. Please contact your stockist or Air Arms for details.



ITEM NO.	PART No	DESCRIPTION	ALLEN KEY SIZE	ACTION
7	E420	Butt clamp screw	4mm	Allows the butt hook to slide in or out of the stock.
14	E310	Pillar	NA	Supports the butt hook in the stock.
19	E820	Backing plate clamp screw	4mm	Allows the plate to be positioned on the ball joint.
20	E496	Pivot plate clamp screw	3mm	Allows the pivot plate to slide up or down.
23	E825	Butt pad backing plate	NA	Clamps on a ball joint to the extender rod and attaches the pivot plate.
24	E835	Pivot plate	NA	Allows the butt pad assembly to slide up or down.
28	E860-T	Top arm support	NA	Supports the top arm and pivots left and right for position.
29	E860-B	Bottom arm support	NA	Supports the bottom arm and pivots left and right for position.
30	E122	Locking screw for top & bottom supports	2mm	Screw used to clamp top and bottom supports in position.
31	E865-T	Top arm	NA	Allows the shooter to make the butt hook fit the shoulder more tightly increasing stability.
32	E865-B1	Bottom arm	NA	Allows the shooter to make the butt hook fit the shoulder more tightly increasing stability.
33	E865-B2	Bottom arm extension	NA	Allows further contact with the shooter under or behind the arm.
34	E845	Locking screw for top & bottom arms	4mm	Screw used to lock the top and bottom arms in position.
36	E850	Locking screw for bottom arm ext	3mm	Allows the bottom arm extension to be positioned as required.

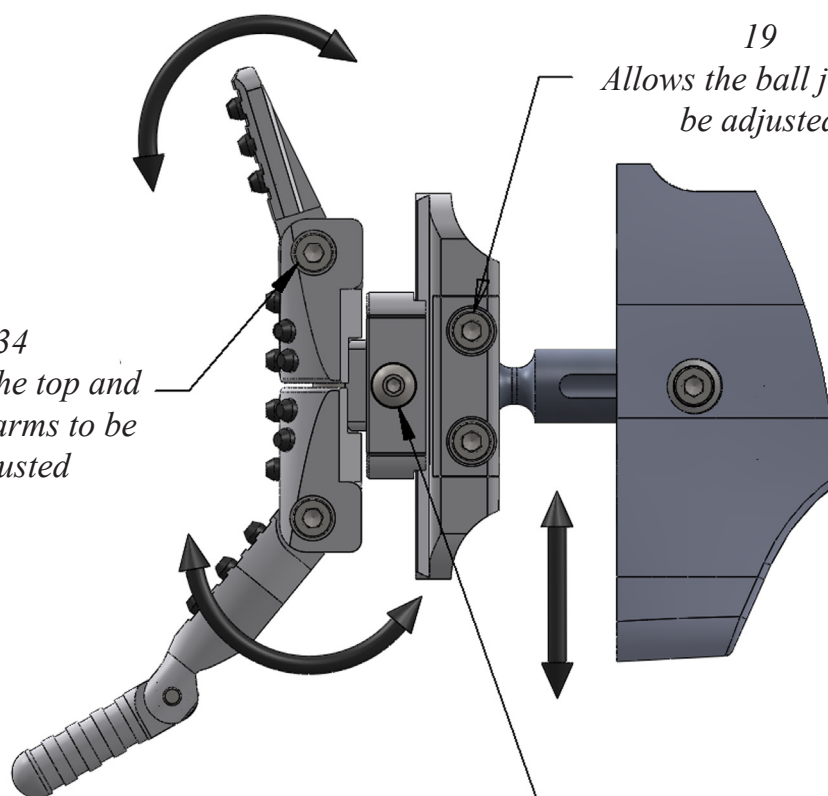
30  
*Allows the top  
and bottom  
supports to rotate*

7  
*Allows the pad to  
slide in and out of  
the stock*



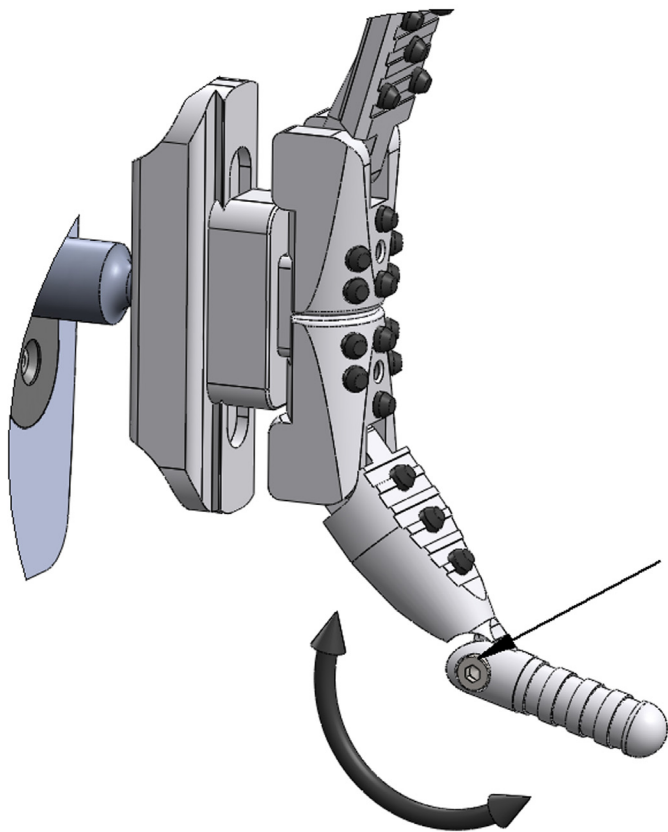
34  
*Allows the top and  
bottom arms to be  
adjusted*

19  
*Allows the ball joint to  
be adjusted*

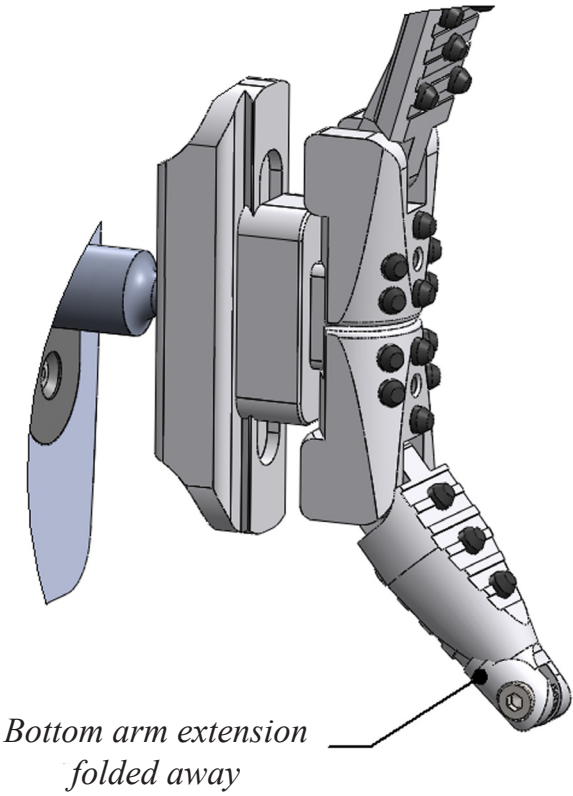


20  
*Allows the pivot plate to  
slide up and down*

Screw No.	Allen key size
30	2mm
7	4mm
34	4mm
20	3mm
19	4mm
36	3mm



36  
*Allows the bottom arm  
extension to be positioned  
or folded away*



*Bottom arm extension  
folded away*

## **TRIGGER ADJUSTMENT**

The trigger on the FTP-900 is a multi-adjustable two stage match trigger with 4 positional adjustments and five pull-off and sensitivity settings.

This allows the shooter to place the trigger button in the perfect position and have the pull of the trigger to their exact requirements.

**NOTE: Two stage triggers can be very difficult to set or adjust, an adjustment of any of the screws will affect the position of the other screws and contact points in the trigger. If you have little or no experience consider leaving as factory set. If you do wish to change the setting it is good practise to make very small adjustments (1/8 or 1/4 of a turn) taking written notes of what you have done so that it is possible to return the trigger to the original setting. A POORLY ADJUSTED TRIGGER CAN BE DANGEROUS.**

**MAKE SURE THE RIFLE IS NOT COCKED OR LOADED BEFORE MAKING ANY ADJUSTMENT TO THE TRIGGER.**

### **First stage adjustment**

First stage adjustment is primarily set using screw 28, adjust this screw in (clockwise) to shorten the stage and out (anti-clockwise) to lengthen the stage.

### **Second stage adjustment**

To adjust the second stage use screws 24-1 & 24-2. These screws adjust in (clockwise) & out (anti-clockwise) to set the exact let off point.

Screw 24-1 is the primary screw, adjusting this in will increase sensitivity. Screw 24-2 can be used to change the pivot point and therefore the length of each stage.

### **Pull through stop setting**

The FTP-900 uses a trigger designed to use 'pull through' during the firing sequence. This means that after the shot is taken the trigger will need to be pulled to a stop to allow the sears to reset. This function also causes the shooter to stay on target and improves accuracy.

If the pull through stop is set too close to the second stage the sears may not reset and cause problems with cocking the rifle. Use screw 29 to adjust the stop point.

### **Trigger weight**

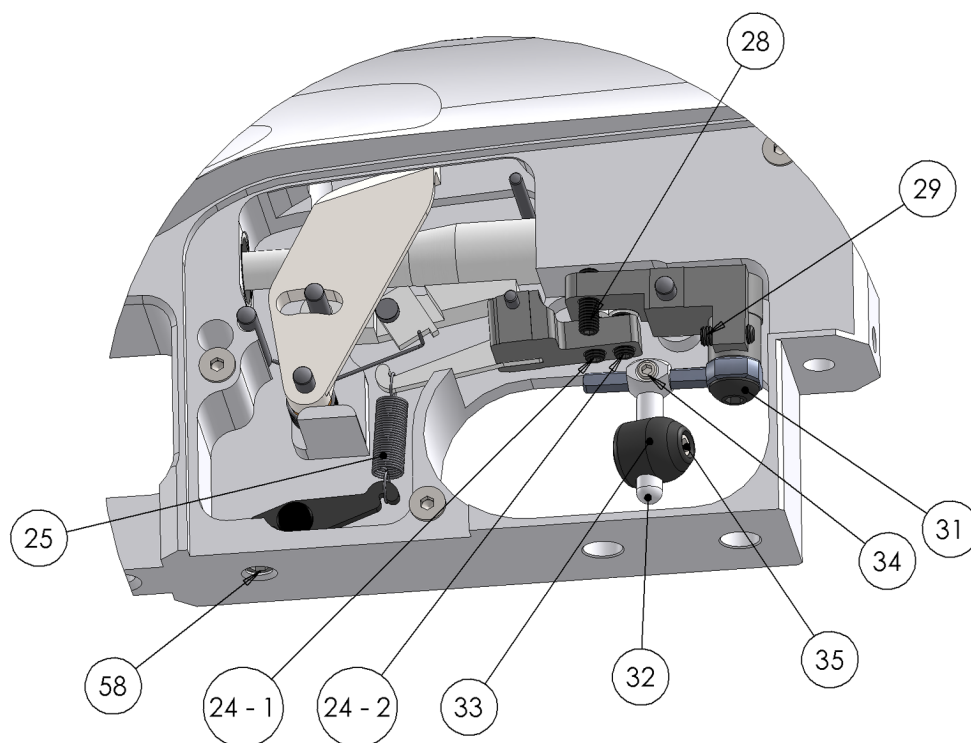
The weight or spring load on the sears is controlled by the trigger weight screw 58, turn the screw in (clockwise) to increase weight and out (anti-clockwise) to make the trigger load lighter. If the load is too light you may experience some problems with the sears resetting if you decide not to take the shot after taking up the first stage.

**CARE MUST BE TAKEN WHEN ADJUSTING THE TRIGGER, CHANGES TO EACH SCREW WILL AFFECT THE OTHER SCREW SETTINGS AND THE TRIGGER MAY NOT PERFORM AS EXPECTED.**

**ALWAYS MAKE SURE THE RIFLE IS NOT LOADED DURING TRIGGER ADJUSTMENTS.**

It can be easier to adjust the trigger with the action out of the stock. To remove the stock first remove the clamp screw for the fore-end, screw 6. Then remove the 2 stock screws in the side of the rifle and the single screw from the bottom. The side screws require a 3mm allen key and the bottom screw requires a 4mm allen key. The action can then be lifted clear of the stock. Be careful not to drop the fore end clamp piece onto the wood as this item will now be loose in the action.

To refit the stock is the reverse process. Remember to insert the clamp piece before inserting the action into the wood. Care also needs to be taken not to damage the wood as the action may be a tight fit.



ITEM NO.	PART No	DESCRIPTION	ALLEN KEY SIZE	ACTION
25	RN360	Trigger weight spring	NA	Applies tension to the sear group
58	TX381	Trigger weight screw	3mm	Allows the tension to be adjusted on the sears and therefore trigger weight
24-1	RN310	Second stage adjuster screw - 1	1.5mm	Allows second stage start point to be defined (use in conjunction with 24-2)
24-2	RN310	Second stage adjuster screw - 2	1.5mm	Allows second stage start point to be defined (use in conjunction with 24-1)
33	E645	Trigger button	NA	Can be placed up or down the trigger pillar as well as twisting to allow perfect position
32	RN330	Trigger pillar	NA	Supports the trigger button and slide along the Trigger bar to allow forward or backward adjustment
35	TX228	Trigger button screw	2mm	Allows adjustment of the trigger button
34	TX239	Trigger pillar screw	1.5mm	Allows the trigger pillar to be adjusted along the trigger bar
31	RN328	Trigger bar screw	2mm	Allows the trigger bar to be adjusted
29	RN321	Trigger pull through screw	1.5mm	Allows the trigger pull through stop to be adjusted
28	RN322	First stage adjuster screw	1.5mm	Allows the first stage of pull to be set (use in conjunction with 24-1 & 24-2)

## MAINTENANCE AND LUBRICATION

### Correct types of lubrication

Air Arms recommend Molybdenum Disulphide based grease on lubrication points 'A' and low viscosity mineral based oils on points 'B'. See below.

### Where to use lubrication

To maintain the surface finish of your rifle we recommend that all metal surfaces are wiped after use with an oil impregnated cloth. This will help to protect the surface finish and remove any corrosive liquids that have touched the metal. Pay particular attention to areas that come into contact with your hands or skin.

**If the rifle has been used in wet or damp conditions it is a wise precaution to remove the action from the stock and clean the metal work below stock level. This is achieved by removing the fore end rest, side stock screws and bottom stock screw. When lifting the action from the stock be aware that the clamp for the fore end will be loose and could drop onto the wood.**

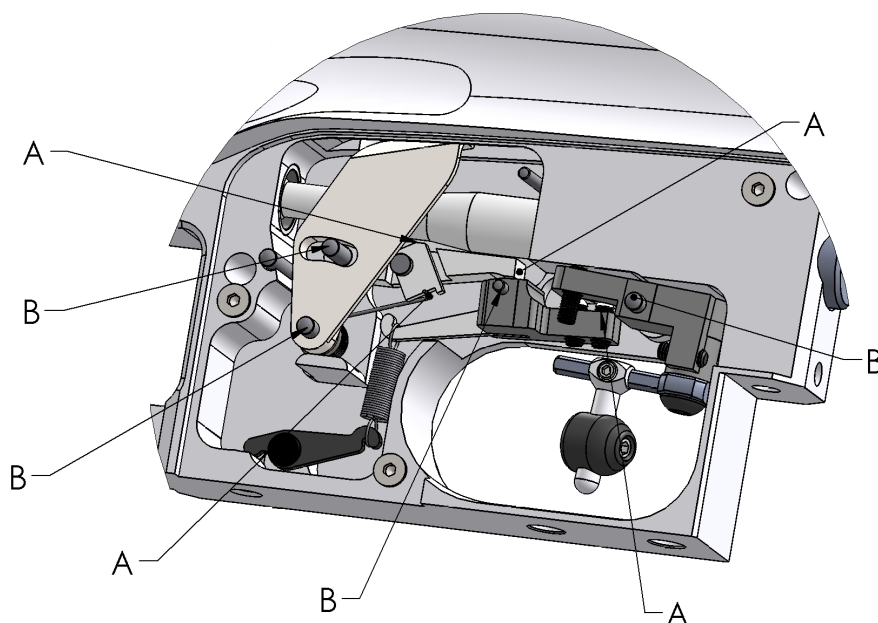
**Some rifles are fitted with stock shims to perfectly position the FTP action within the stock. These shims are selected during assembly and are used to ensure the optimum union between metal and wood. There are several sizes available to the gunsmith who will assess and use the required size. Not every rifle will require a shim fitted.**

**Also check if water has entered the muzzle. If this is the case remove the muzzle from the barrel to dry and re-grease this area. This is achieved by loosening the screw on the top of the muzzle and sliding it from the barrel. When refitting ensure that the screw is aligned with the dimple in the barrel before tightening.**

### The trigger unit

The lubrication points for the trigger are outlined below.

- |   |   |        |
|---|---|--------|
| A | - | Grease |
| B | - | Oil    |



## Barrel cleaning

To keep your rifle in the peak of performance it is recommended that the barrel is periodically cleaned and re-oiled. The exact time or when to clean the barrel will vary from rifle to rifle, we generally state that if you see the accuracy 'going off' now is the time to clean. Lead is a natural lubricant and most barrels will benefit from having several hundred shots fired through after cleaning to come back to their best performance.

The best way to do this is with a pull through and rifle cleaning pads using a little cleaning fluid and gun oil. Air Arms use Napier cleaning products.

### BEFORE CLEANING MAKE SURE THE RIFLE IS NOT COCKED OR LOADED

1. Cut several 30mm lengths of cleaning cloth
2. Spray a small amount of the cleaning fluid into the bore of the rifle, be sure not to soak the action
3. Thread the pull through down the barrel, this may be easier with a straw or similar plastic tube when feeding from the muzzle end
4. Place a piece of cleaning cloth through the loop and spray a little more cleaning fluid onto the cloth, Now pull the cloth slowly through the barrel.
5. Repeat this process until the cloth comes through clean
6. Now repeat the process with an oiled pad

Once this has been completed it is recommended that 10-20 shots are fired through the barrel to clear excess oil and re-lead the barrel.

CLEANER:	'NAPIER FORMULA X', ALTERNATIVELY WHITE SPIRIT.
OIL:	'NAPIER GUN OIL', ALTERNATIVELY '3 IN 1' OIL.
GREASE:	'NAPIER GUN GREASE', ALTERNATIVELY A MOLY BASED GREASE
PULL-THROUGH PAD:	'NAPIER RIFLE CLEAN', ALTERNATIVELY SOFT COTTON CLOTH.
PULL-THROUGH LINE:	'NAPIER PULL THROUGH KIT', ALTERNATIVELY 20lb FISHING LINE

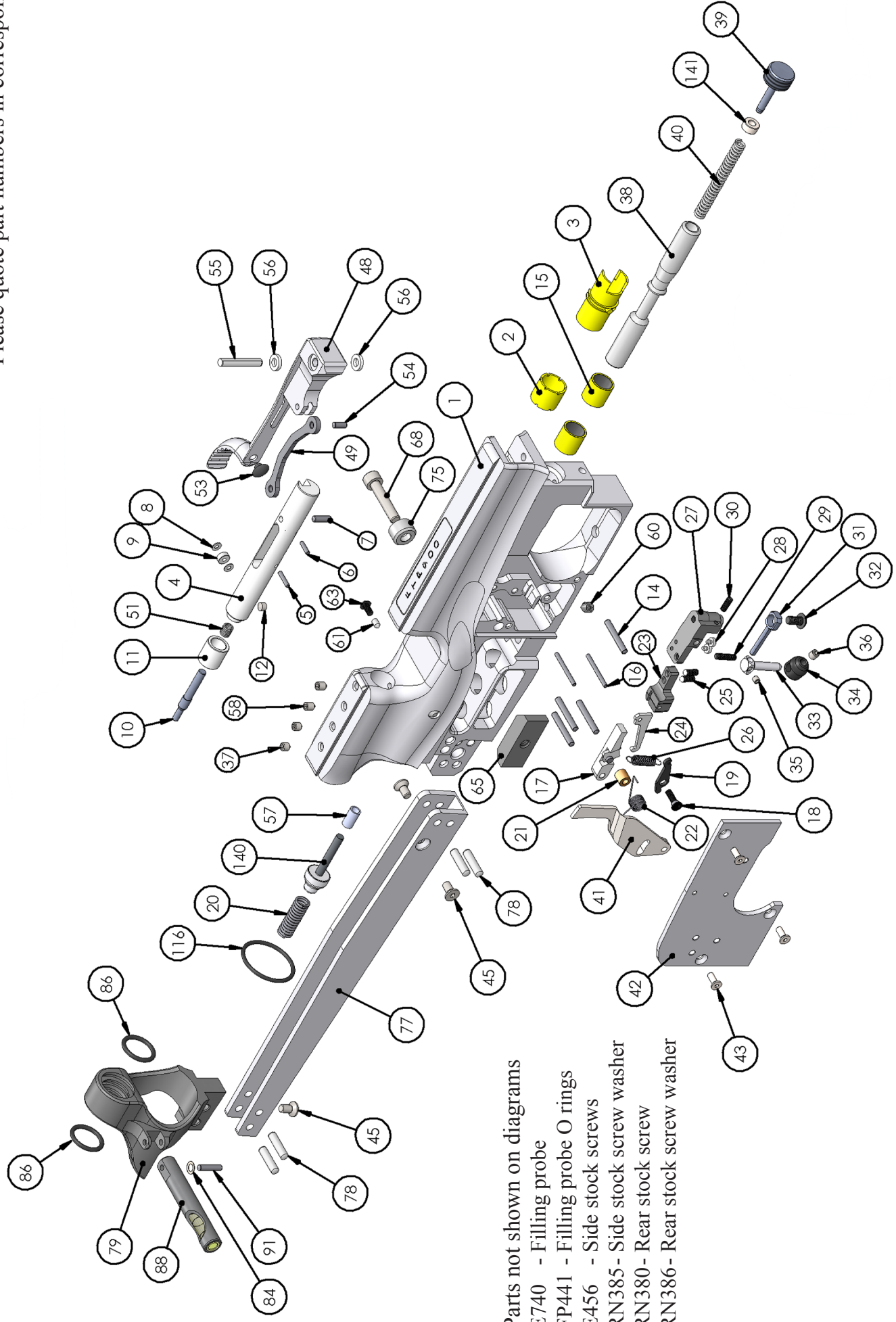
## Miscellaneous

The pivot points of the wind indicator, level housing, cocking arm and link will benefit from a small amount of oil occasionally and the loading bolt shaft should be wiped over with an oil impregnated cloth after use. The loading bolt shaft runs on bearings and does not need oil to operate, this process is to ensure the shaft stays clean and does not allow dirt into the action.

**NOTE:** It is recommended that the O rings on the probe are smeared with a light synthetic oil to from time to time to keep them lubricated. This will help avoid wear and prolong the life of the O ring.

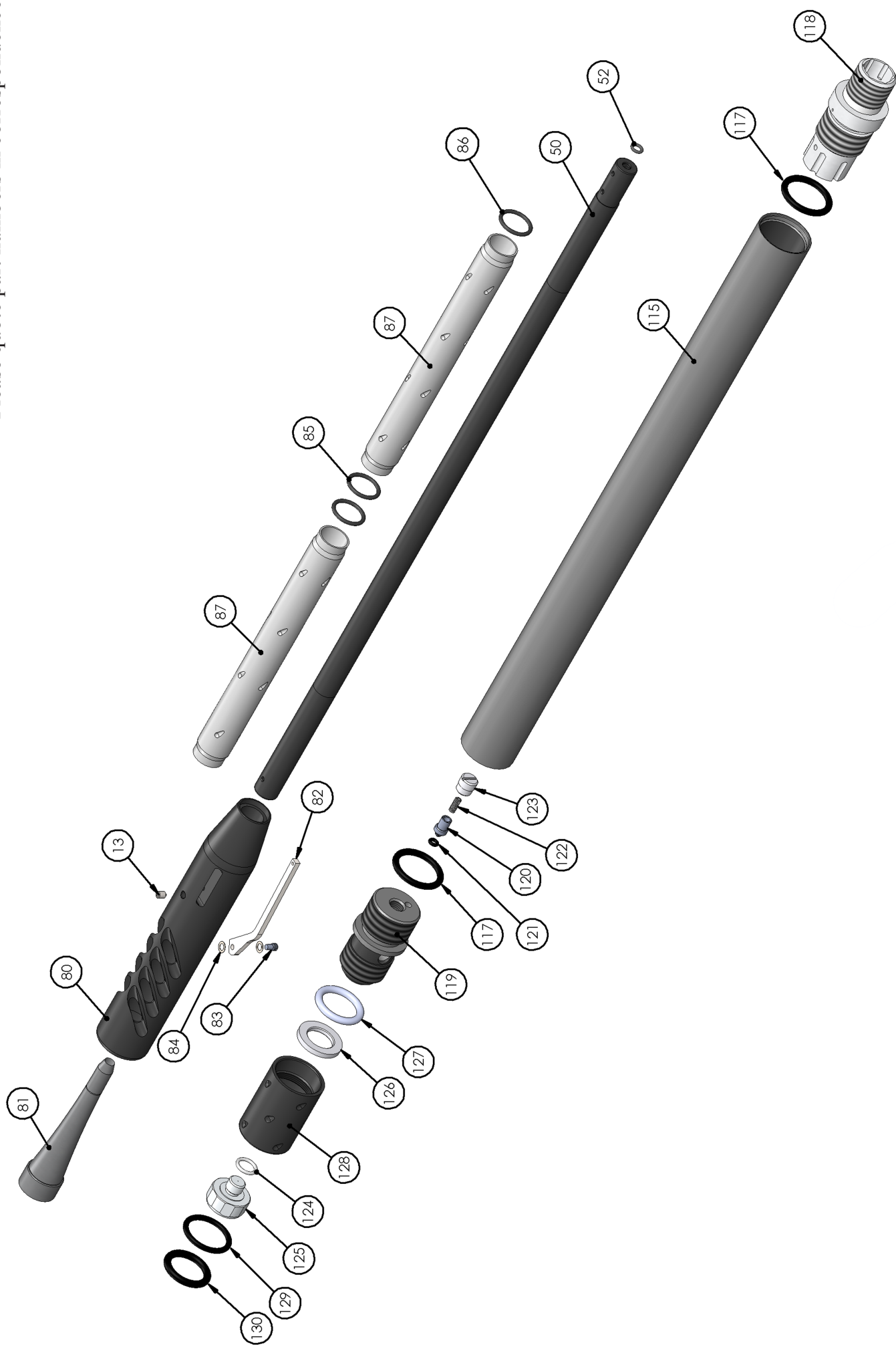
ITEM NO.	PART NUMBER	DESCRIPTION	QTY.	ITEM NO.	PART NUMBER	DESCRIPTION	QTY.
1	E760	MAIN BODY - FTP900	1	38	RN200FT-AT	STRIKER	1
2	E670	LOADING BOLT SHAFT FRONT BEARING	1	39	RN210AT	POWER ADJUSTER - ANTI TAMPER	1
3	E665	LOADING BOLT SHAFT REAR BEARING	1		RN210E	POWER ADJUSTER - EXPORT	
4	E675	LOADING BOLT SHAFT	1	40	RN205	MAIN SPRING	1
5	E695	2 X 10 DOWEL	1	41	E680	COCKING LEVER	1
6	E705	2 X 8 DOWEL	1	42	E720	SIDE PLATE	1
7	E690	4 X 10 DOWEL	1	43	E795	M3 X 8 CSK SKT	3
8	E780	2mm WASHER	2	45	E815	M4 X 8 CSK SKT	3
9	E750	COCKING LEVER BEARING	1	48	E715	COCKING ARM	1
10	E725	PELLET PROBE	1	49	E685	COCKING LINK	1
11	E730	DETENT BUSH	1	51	E137	DETENT SPRING	1
12	E113	M4 X 4 SKT SET CONE PT ST/ST	1	53	TX227	BUFFER	1
14	E785	3 X 22 ROLLER	4	54	E127	3 X 11.8 ROLLER	1
15	RN103	STRIKER BUSH	2	55	E805	4 X 24 EXTRACTABLE DOWEL	1
16	E790	2 X 22 ROLLER	2	56	E810	COCKING ARM WASHER	2
17	RN284	TOP SEAR ASSEMBLY	1	57	E222	FIRING VALVE BUSH	1
18	RN370	ADJUSTER PLATE SCREW	1	58	E281	M4 X 6 SKT SET CONE PT ST/ST	2
19	RN365	TRIGGER WEIGHT ADJUSTER PLATE	1	60	TX381	M5 X 6 SKT SET CONE PT	1
20	RN198FT	FIRING VALVE SPRING	1	61	RN191	ADJUSTER SCREW	1
21	RN281	COCKING PLATE INNER SPACER	1	62	S680	BLANKING SCREW	1
22	RN280	TOP SEAR SPRING	1	65	E415	FORE-END LOCKING PLATE	1
23	RN305-2	MIDDLE SEAR BLOCK	1	68	RN420	M5 X 25 SKT CAP ST/ST	1
24	RN300	MIDDLE SEAR	1	75	E912	FORE END ADJUSTER LOCKING BUSH	1
25	RN310	TRIGGER ADJUSTER SCREW	2	77	E630	BARREL CLAMP RAIL	1
26	RN360	TRIGGER WEIGHT SPRING	1	78	PS245	M6 X 16 DOWEL	4
27	RN315	TRIGGER PIVOT BLOCK	1	79	E620	BARREL CLAMP - RH	1
28	RN320	TRIGGER PIVOT BLOCK PAD	2		E620-L	BARREL CLAMP - LH	
29	RN322	M3 X 12 SKT SET FLAT POINT	1	84	E160	M3 CRINKLE WASHER	2
30	RN321	M3 X 8 SKT SET FLAT POINT	1	86	E625	SHROUD BUFFER O RING 14 X 2	3
31	RN325	TRIGGER BAR	1	88	E445A	LEVEL HOUSING ASSY - RH	1
32	RN328	M4 X 8 SKT BTN HEAD	1		E445A-LH	LEVEL HOUSING ASSY - LH	
33	RN330	TRIGGER PILLAR	1	91	TX297	3 X 13.8 ROLLER	1
34	E745	TRIGGER BUTTON	1	116	E935	24 X 2 O RING	1
35	TX239	M3 X 3 SKT SET FT PT	1	140	E885-2	FTP-900 - FIRING VALVE ASSY	1
36	TX228	M4 X 4 SKT SET FL PT	1	141	RN210-4mm	STRIKER SPACER	1
37	E122	M4 X 4 SKT SET FL PT ST/ST	2				

Please quote part numbers in correspondence



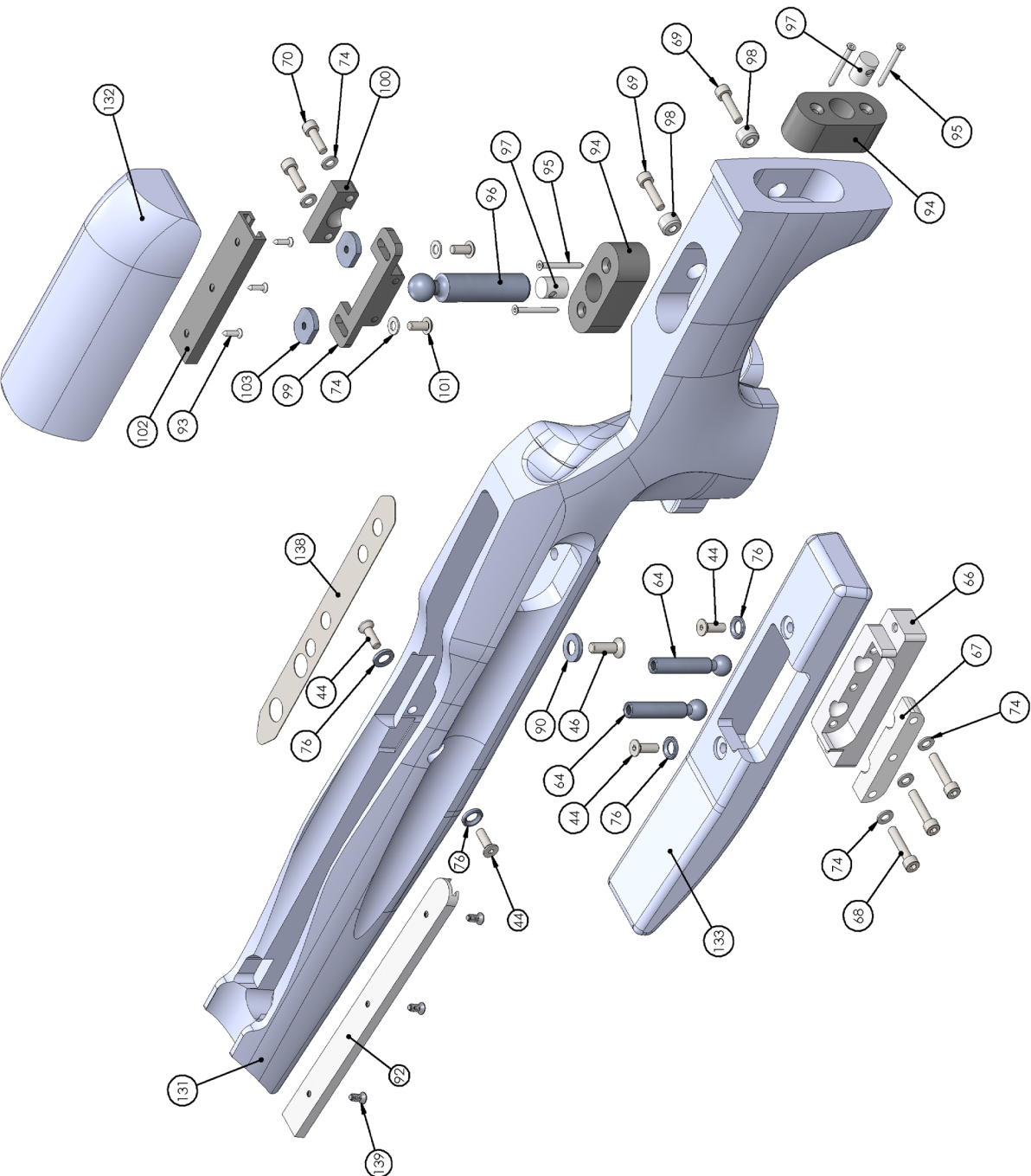
ITEM NO.	PART NUMBER	DESCRIPTION	QTY.	ITEM NO.	PART NUMBER	DESCRIPTION	QTY.
13	E281	M4 X 6 SKT SET CONE PT ST/ST	1	118	E880A	FTP-900 REGULATOR	1
50	E700	BARREL	1	119	E645-1	GAUGE BODY	1
52	FP121	4.5 X 1.5 NBR70	1	120	AF440	FILLING VALVE	1
80	E600	MUZZLE END BODY - RH	1	121	S327	BS005 O RING 90 SHURE	1
	E600-L	MUZZLE END BODY - LH		122	S319	FILLING VALVE SPRING	1
81	E605	MUZZLE END INSERT	1	123	AF430	F/VALVE SPRING RETAINER	1
82	E610	WIND INDICATOR	1	124	RN219-7	BS012	1
83	E615	WIND INDICATOR SCREW	1	125	S645	INDICATOR GAUGE	1
84	E160	M3 CRINKLE WASHER	2	126	E645-3	RETAINING RING	1
85	E625-2	SHROUD BUFFER O RING 16 X 2	2	127	E645-4	RETAINING RING O RING	1
87	E635	SHROUD	2	128	E645-2	GAUGE COVER	1
115	S335	CYL TUBE	1	129	E234	23 X 3 O RING	1
117	RN234	BS213 O RING	2	130	RN241	20 X 4 O RING	1

Please quote part numbers in correspondence

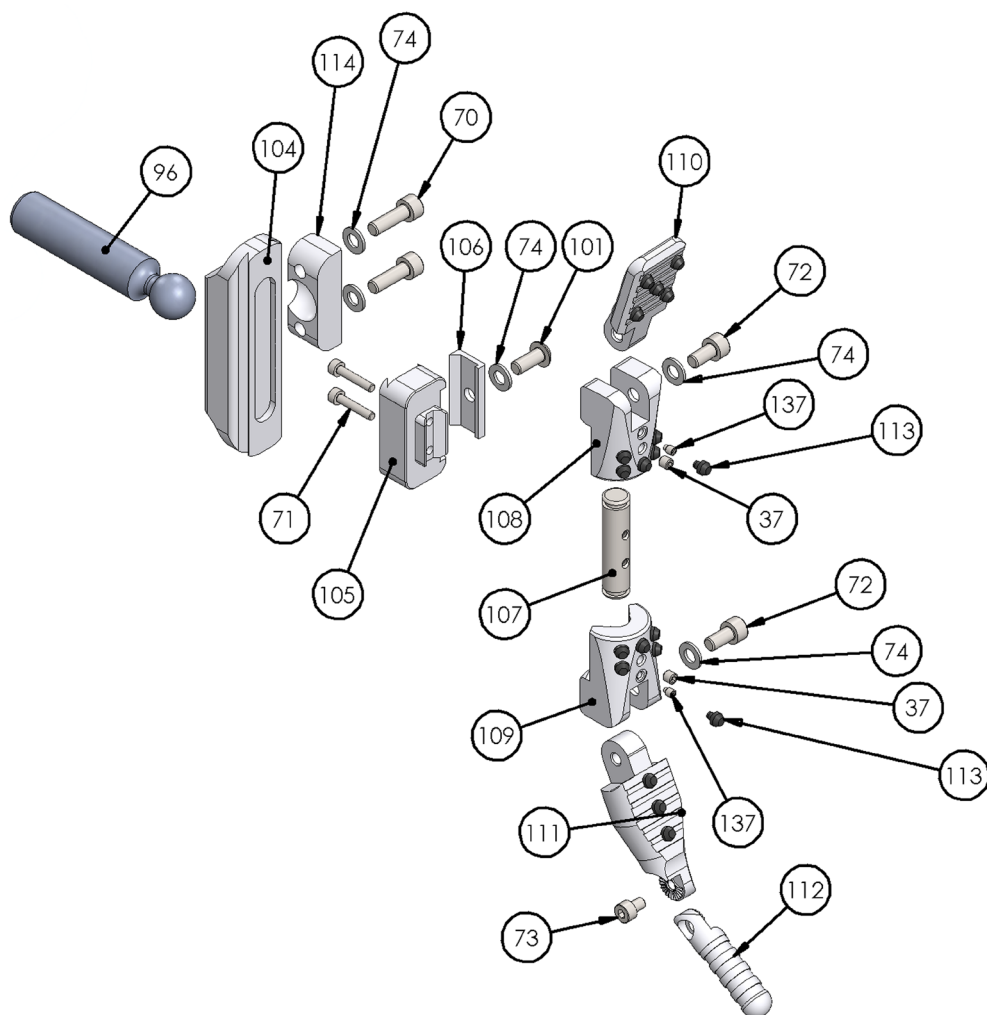


ITEM NO.	PART NUMBER	DESCRIPTION	QTY.	ITEM NO.	PART NUMBER	DESCRIPTION	QTY.
44	E456	M5 X 16 CSK SKT ST/ST	4	98	E910	ADJUSTER LOCKING BUSH - FTP-900	2
46	RN380	M6 X 20 CSK SKT	1	99	E325	CHEEK PIECE TOP CLAMP - PT1	1
64	E755-1	PALM REST PILLAR	2	100	E330	CHEEK PIECE TOP CLAMP - PT 2	1
66	E765-1	FORE END CLAMP - PT 1	1	101	E496	M5 X 12 SKT BT ST/ST	2
67	E765-2	FORE END CLAMP - PT2	1	102	E335	CHEEK PIECE RAIL	1
68	RN420	M5 X 25 SKT CAP ST/ST	3	103	E340	RAIL NUT	2
69	E420	M5 X 20 SKT CAP ST/ST	2	131	E800-1RL	FTP-900 - STOCK MAIN BODY - RH	1
70	E820	M5 X 16 SKT CAP ST/ST	2		E801-1RL	FTP-900 - STOCK MAIN BODY - LH	
74	RN431	WASHER	7	132	E800-2RL	FTP-900 - CHEEK PIECE - RH	1
76	RN385	STOCK WASHER - FRONT	4		E801-2RL	FTP-900 - CHEEK PIECE - LH	
84	E160	M3 CRINKLE WASHER	2	133	E800-3RL	FTP-900 - FORE-END	1
90	RN386	STOCK WASHER - REAR	1	134	E800-4RL	FTP-900 - PALM SHELF - RH	1
92	E441	RAIL	1		E801-4RL	FTP-900 - PALM SHELF - LH	
93	KS445	No 6 X 1/2" POZI CSK	3	135	E900	PALM SHELF NUT	2
94	E315	CHEEK PIECE PILLAR BOTTOM PLATE	2	136	E895	M3 X 40 SKT CAP	2
95	RN435	No 6 X 1 1/4" POZI CSK	4	138	E920-.5	SHIM - .50mm	1
96	E310	CHEEK PIECE PILLAR	1	139	RN445	No6 X 3/8" POZI C/SUNK	3
97	E320	PILLAR NUT	2				

Please quote part numbers in correspondence

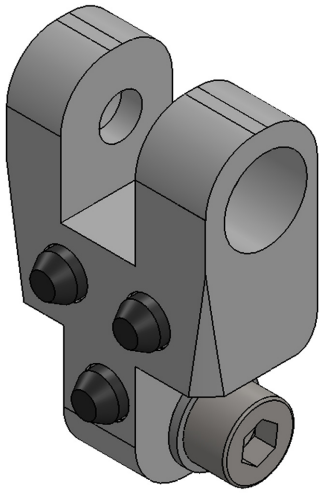


ITEM NO.	PART NUMBER	DESCRIPTION	QTY.
37	E122	M4 X 4 SKT SET FL PT ST/ST	2
70	E820	M5 X 16 SKT CAP ST/ST	2
71	RN102A	M3 X 16 SKT CAP	2
72	E845	M5 X 10 SKT CAP ST/ST	2
73	E850	M4 X 6 SKT CAP ST/ST	1
74	RN431	WASHER	5
96	E310	CHEEK PIECE PILLAR	1
101	E496	M5 X 12 SKT BT ST/ST	1
104	E825	BUTT PAD BACKING PLATE - PT1	1
105	E835	PIVOT PLATE - PT1	1
106	E840	PIVOT PLATE - PT2	1
107	E855	PIVOT BAR	1
108	E860-T	TOP ARM SUPPORT	1
109	E860-B	BOTTOM ARM SUPPORT	1
110	E865-T	TOP ARM	1
111	E865-B1	BOTTOM ARM	1
112	E865-B2	BOTTOM ARM EXTENSION	1
113	E870	BUTT PAD GROMMET	20
114	E830	BUTT PAD BACKING PLATE - PT2	1
137	E905	M3 X 4 DOG PT	2

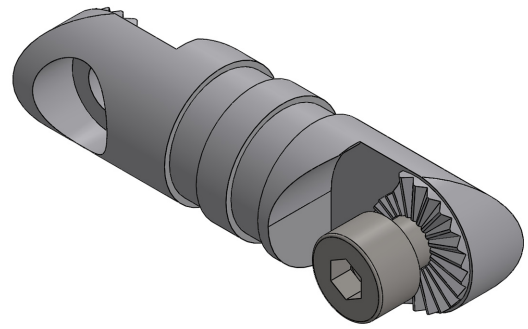


Please quote part numbers in correspondence

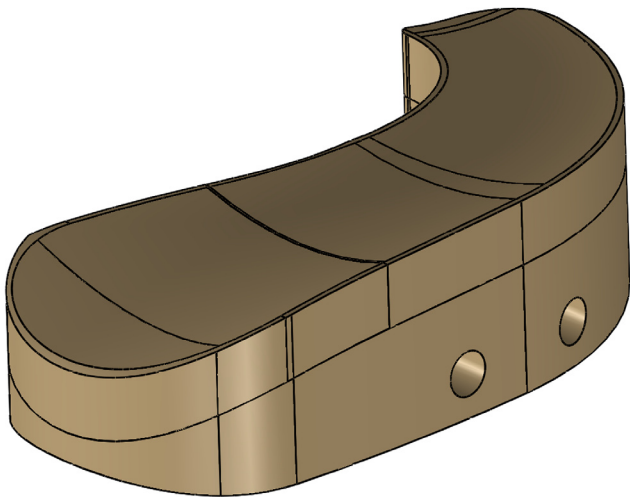
## Accessories



E865-T1-A - Extension piece for the top arm of the butt hook. Allows the arm to extend up and over the shoulder. Multiples can be added as required. Adds 26.5mm to length.



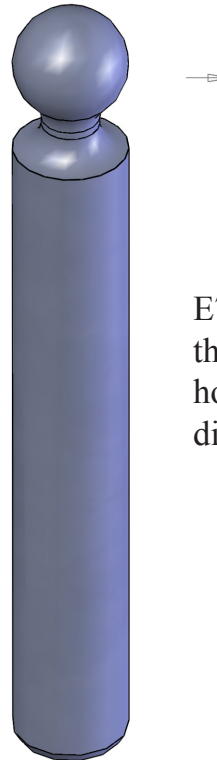
E865-B3-A - Extension piece for the bottom arm of the butt hook. Makes the arm longer and able to articulate. Multiples can be added as required. Adds 28.5mm to length.



E800-5RL (RH) & E801-5RL (LH) - Extended palm shelf for the smaller hand. Closes the gap up by 10mm.



E755-4 - Extension piece for the fore-end rods. Simply screws into existing rods to add 40mm length.



E735 - Extension rods for the cheek piece and butt hook assembly. 40mm additional length.

Notes:

## WARRANTY (UK ONLY)

*This product is warranted to the retail consumer for 12 months from date of purchase against defects in material and workmanship and is transferable. Proof of purchase is required to receive warranty repairs.*

*Retain your invoice and return the warranty form (below) or fill in the online form at; [www.air-arms.co.uk/warranty-submission](http://www.air-arms.co.uk/warranty-submission).*

### *What is covered*

*Replacement parts and labour. Return transportation to the consumer (UK mainland only).*

### *What is not covered*

*Transportation from the consumer to Air Arms.*

*Damage caused by misuse, abuse, disassembly or lack of routine maintenance.*

*No warranty is implied as to the fitness for any particular purpose. Return transportation to consumers outside the UK mainland.*

---

PLEASE RETURN THIS PART

Gun No \_\_\_\_\_ Model \_\_\_\_\_

Date of Purchase \_\_\_\_\_

Purchased from \_\_\_\_\_

\_\_\_\_\_

\_\_\_\_\_

Your name and address \_\_\_\_\_

\_\_\_\_\_

\_\_\_\_\_

## IMPORTANT INFORMATION

*Please read the following information and instructions in the users handbook, they are vital to the long term serviceability of your rifle.*

*The adjustments and settings of this rifle have been set with special equipment at the factory to obtain the optimum performance, these must not be altered in any way (unless otherwise indicated in the users handbook).*

*If you experience any problems, contact your retailer and explain the fault, they will advise you on whether the rifle should be returned to them or Air Arms.*

*May we suggest that you have the rifle serviced annually to maintain the long term reliability of the rifle, it is important for us to keep a record of all users. Could we please ask you to complete the form overleaf and return to Air Arms.*

*This will enable us to contact you in future, to pass on useful information and/or to get your opinions and general feedback.*

*Anticipating your cooperation and wishing you every success in your shooting.*

Affix  
stamp  
here

AIR ARMS  
HAILSHAM INDUSTRIAL PARK  
DIPLOCKS WAY  
HAILSHAM  
EAST SUSSEX BN27 3JF  
ENGLAND



Air Arms, Unit 6, Hailsham Industrial Park, Diplocks  
Way, Hailsham, East Sussex, England BN27 3JF.

Tel: 01323 845853. Fax: 01323 440573.

Website: [www.air-arms.co.uk](http://www.air-arms.co.uk)

Email: [general@air-arms.co.uk](mailto:general@air-arms.co.uk)